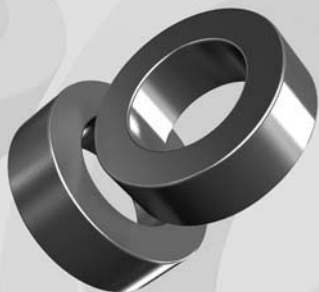


OD 127

OD 12.70mm / 0.500inch



ID 7.62mm
HT 4.75mm

Core Dimensions

		OD(max)	ID(min)	HT(max)
Before coating	(mm)	12.70	7.62	4.75
	(inch)	0.500	0.300	0.187
After coating (parylene-C)	(mm)	13.46	6.99	5.51
	(inch)	0.530	0.275	0.217

Magnetic Dimensions

Cross Section (A)	Path Length (ℓ)	Window Area (Wa)	Volume (V)
0.114cm ²	3.12cm	0.383cm ²	0.35568cm ³
0.01767in ²	1.229in	75,600cmil	0.002172in ³

Available Cores

MPP	Part No.				AL (mH/N ²)	Perm. (μ)
	High Flux	Sendust	Mega Flux®			
CM127026	CH127026	CS127026	CK127026	12	26	
CM127060	CH127060	CS127060	CK127060	27	60	
-	-	CS127075	CK127075	34	75	
-	-	CS127090	CK127090	40	90	
CM127125	CH127125	CS127125	-	56	125	
CM127147	CH127147	-	-	67	147	
CM127160	CH127160	-	-	72	160	
CM127173	-	-	-	79	173	
CM127200	-	-	-	90	200	

Winding Information

AWG Wire No.	Single Layer Turn	AWG Wire No.	Single Layer Turn
15	10	24	31
16	11	25	35
17	13	26	40
18	15	27	45
19	17	28	50
20	19	29	56
21	22	30	63
22	25	31	69
23	28	32	77

Single layer winding with 1 inch leads

AL vs NI Curve (60μ, 125μ)

