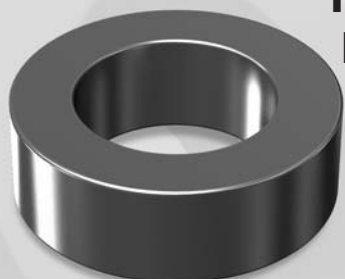


OD229

OD 22.86mm / 0.900inch



ID 13.97mm
HT 7.62mm

Core Dimensions

		OD(max)	ID(min)	HT(max)
Before coating	(mm)	22.86	13.97	7.62
	(inch)	0.900	0.550	0.300
After coating (parlyene-C)	(mm)	23.62	13.39	8.38
	(inch)	0.930	0.527	0.330

Magnetic Dimensions

Cross Section (A)	Path Length (ℓ)	Window Area (Wa)	Volume (V)
0.331cm ²	5.67cm	1.41cm ²	1.8771cm ³
00.0513in ²	2.23in	277,700cmil	0.11455in ³

Available Cores

MPP	Part No.			AL (nH/N ²)	Perm. (μ)
	High Flux	Sendust	Mega Flux®		
CM229026	CH229026	CS229026	CK229026	19	26
CM229060	CH229060	CS229060	CK229060	43	60
-	-	CS229075	CK229075	54	75
-	-	CS229090	CK229090	65	90
CM229125	CH229125	CS229125	-	90	125
CM229147	CH229147	-	-	106	147
CM229160	CH229160	-	-	115	160
CM229173	-	-	-	124	173
CM229200	-	-	-	144	200

Winding Information

AWG Wire No.	Single Layer Turn	AWG Wire No.	Single Layer Turn
12 0.213	15 0.00276	21 0.0785	45 0.0548
13 0.190	17 0.00384	22 0.0701	50 0.0771
14 0.171	19 0.00532	23 0.0632	56 0.107
15 0.153	22 0.00742	24 0.0566	63 0.150
16 0.137	25 0.0104	25 0.0505	71 0.210
17 0.122	28 0.0144	26 0.0452	79 0.295
18 0.109	31 0.0202	27 0.0409	88 0.409
19 0.0980	35 0.0281	28 0.0366	99 0.577
20 0.0879	40 0.0392	29 0.0330	109 0.791

Single layer winding with 1 inch leads

AL vs NI Curve (60μ, 125μ)

