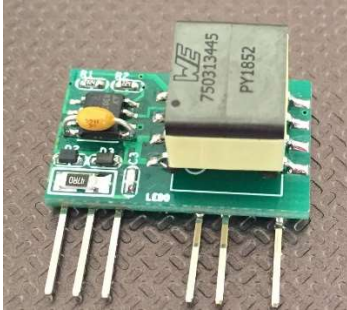


4.5W ISOLATED DC-DC CONTROLLER



- Based on Linear technology CI LT8302
- Input voltage: 10V ... 17V DC
- Output voltage: 24V DC regulated
- Maximum power: 4.5W
- Overload and short circuit protection at the output
- Insulation voltage: 4 kV
- Compatible with XP Power ITX1224S model
- 25 mm x 15 mm x 14 mm

Designed to be used in the manufacture of gate amplifier modules for the control of MOSFETs and IGBTs, as a cheaper variant compared to the use of commercial 4 Watts models, the price of which does not fall below \$ 20.00.

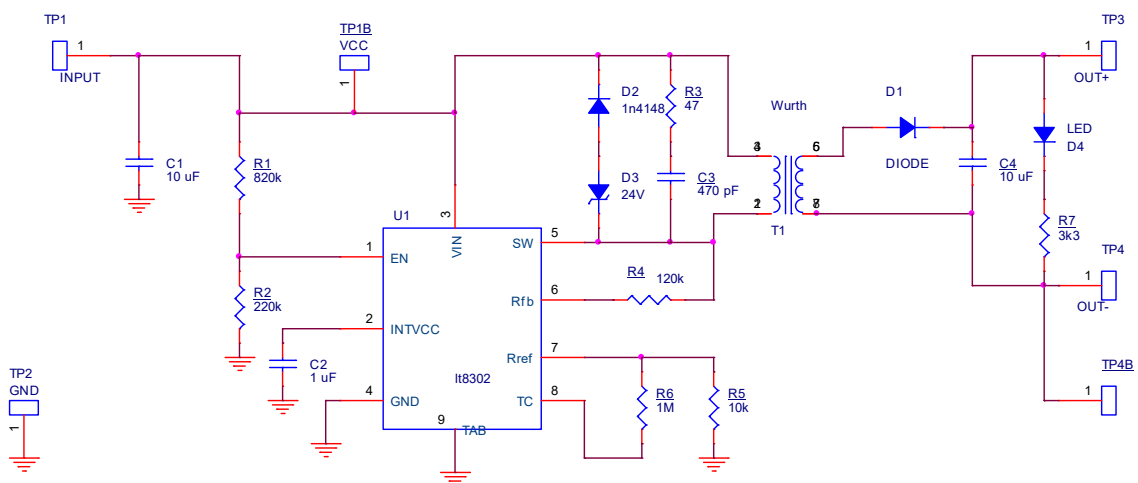


Fig.1. DC-DC Converter schematics.

The Module works correctly without load, and up to a maximum current at the output of 250 mA. The variation of the output voltage over the entire working range is less than one volt. The LT8302 IC, censuses the output voltage by measuring the voltage reflected in the primary of the transformer, without the need to use optocoupler.

Any increase in the output current beyond 250 mA, leads to the LT8302 CI to its protection mode, something very important, if the source is going to be used in gate amplifiers, since it guarantees its survival (and that of the Driver) when the power transistors are shorted.

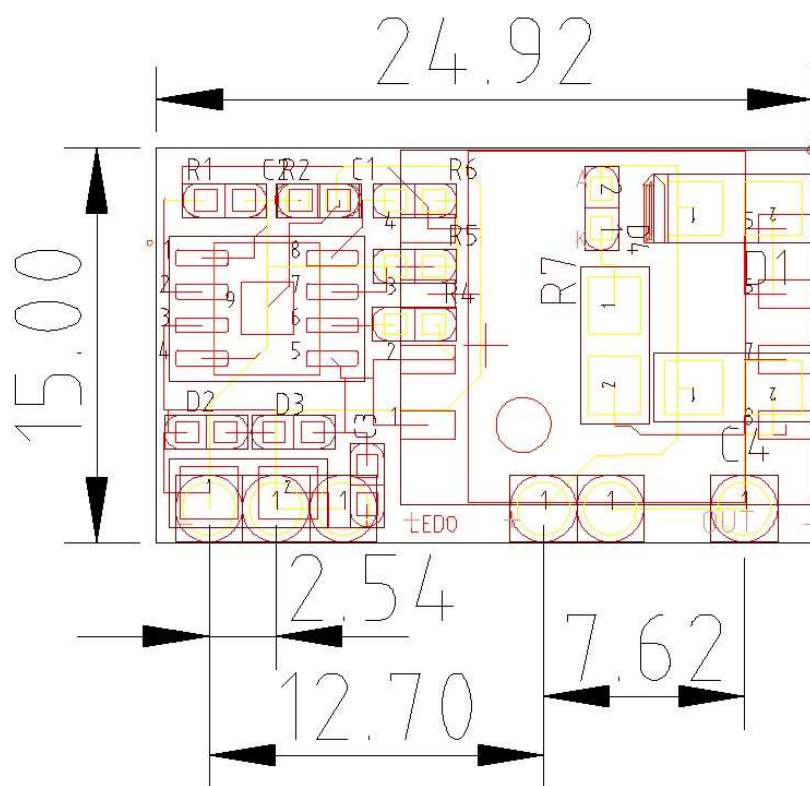


Fig.2. Board outline.